

This manual is for reference and historical purposes, all rights reserved.

**This page is copyright© by M. Butkus, NJ.**

This page may not be sold or distributed without the expressed permission of the producer

I have no connection with any camera company

On-line camera manual library

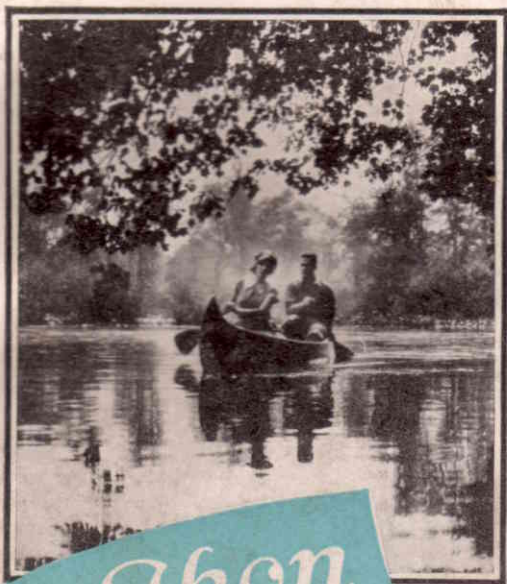
This is the full text and images from the manual. This may take 3 full minutes for the PDF file to download.

**If you find this manual useful, how about a donation of \$3 to: M. Butkus, 29 Lake Ave., High Bridge, NJ 08829-1701 and send your e-mail address so I can thank you. Most other places would charge you \$7.50 for a electronic copy or \$18.00 for a hard to read Xerox copy.**

**This will allow me to continue to buy new manuals and pay their shipping costs.**

**It'll make you feel better, won't it?**

**If you use Pay Pal or wish to use your credit card,  
click on the secure site on my main page.**



Leiss Ikon  
Cameras



# *Zeiss Ikon Cameras*





The photos illustrate the results obtained with a Carl Zeiss "Tessar"  $f:4.5$  of  $5\frac{1}{4}$  inch focal length in combination with "Distar" and "Proxar" Supplementary Lenses on an Ideal B Camera. The top left-hand picture was taken with a "Distar", and the right-hand one with a "Proxar". The bottom picture, from exactly the same point of view, with the "Tessar".



**Z**EISS Ikon is the amalgamation of the former firms of Contessa-Nettel, Ernemann, Goerz and Ica, Europe's largest and best known camera makers.

The many distinctive features of Zeiss Ikon Cameras, their advanced design and unexcelled quality of material and workmanship, have set a new conception of camera standards. Zeiss Ikon Cameras are, indeed, the creations of master camera builders. They arouse that pride of possession which comes only from owning really fine things, and they will inspire their enthusiastic owners to bigger and better photographic accomplishments.

With the exception of a few simpler models, Carl Zeiss Lenses are standard equipment throughout.

On page 49 is a list of cameras, on which Carl Zeiss "Distar" and "Proxar" Supplementary Lenses may be used. The addition of a "Distar" to the Tessar means a larger image of distant objects, and improved perspective of near ones, while the addition of a "Proxar" shortens the focus of the "Tessar". "Proxar" increases the angle of view, and will, therefore, improve results in photographing interiors, street scenes, etc.

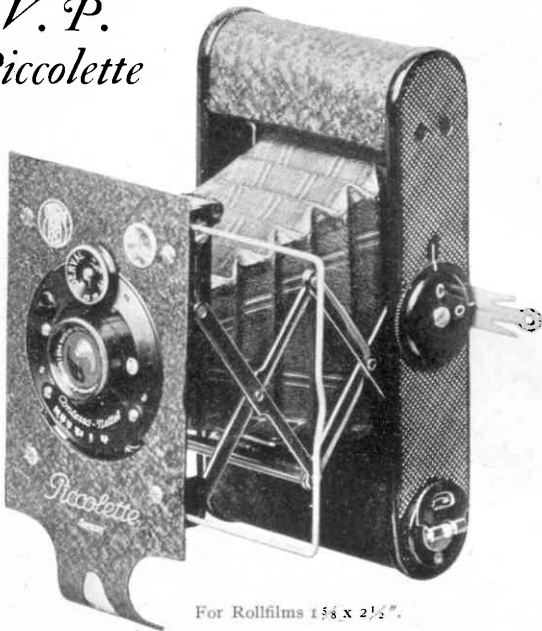
There are so many possibilities for the employment of "Distar" and "Proxar" Lenses, that the prospective buyer may well select a camera, on which they may be used.

All Zeiss Ikon Cameras take standard American plates and films. Cut films may be used in plate holders with the aid of cut film sheaths. Tripod sockets have standard thread; focusing scales are marked in feet, and diaphragm markings are in the familiar *f* system.

A completely equipped Service Department is maintained in New York, where all necessary spare parts are stocked, and repairs made by a staff of expert mechanics.

To possess a Zeiss Ikon Camera means to own quite the best camera that may be had.

*V. P.  
Piccolette*



For Rollfilms  $1\frac{5}{8} \times 2\frac{1}{2}$ ".

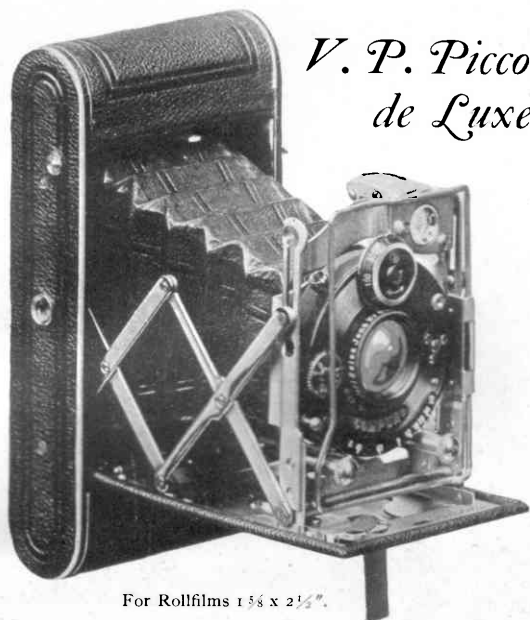
**T**HE Vest Pocket Piccolette is a small, compact camera, conveniently carried in one's pocket. Being a fixed focus model, the Piccolette, when open, is immediately ready to make snapshots. The Iconometer as well as the brilliant finder show the actual composition of the view. The trellis supports insure rigidity and, thereby, parallelism of the lens with the film.

A special feature of all Piccolette and Cocarette Cameras is the convenient method of loading. The film race positively guides the film and prevents buckling. See illustration on page 15.

Picture Size..... $1\frac{5}{8} \times 2\frac{1}{2}$  inch  
Lens.....Nettar Anastigmat  $f:6.3$  of 3 inch focal length  
Shutter.....Derval with cable and finger release  
Speeds..... $1/25, 1/50, 1/100$  sec. Time and Bulb  
Camera Size. .... $1 \times 2\frac{1}{2} \times 4\frac{3}{4}$  inch. Weight: 9 ozs.

## Zeiss Ikon Cameras

---

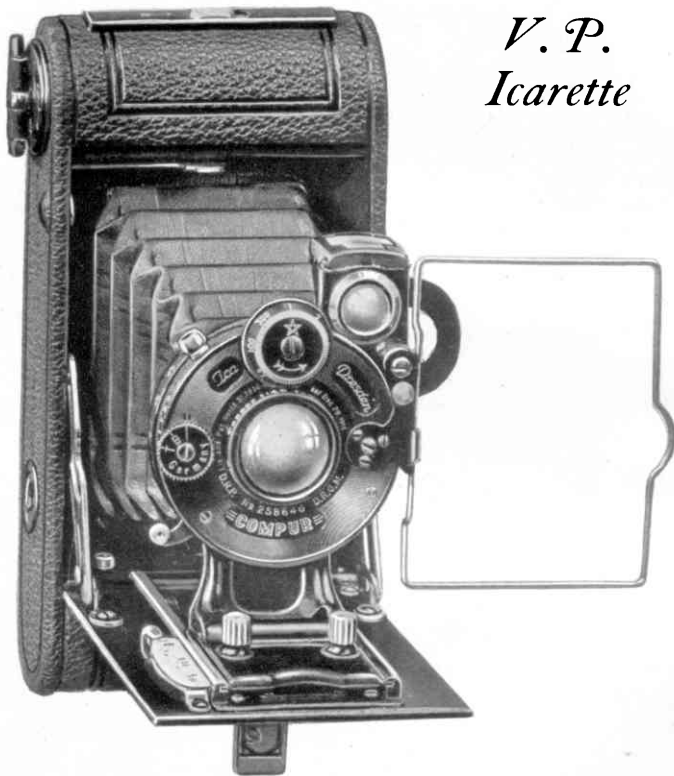


### *V. P. Piccolette de Luxe*

For Rollfilms  $1\frac{5}{8} \times 2\frac{1}{2}$ ".

**T**HE Vest Pocket Piccolette de Luxe is preferred by more exacting amateurs, for it incorporates many refinements. The trellis supports are guided in a grooved bed, which gives rigidity to the front board. The Compur Shutter has eight speeds, ranging from 1 to  $1/300$  sec., enough for fast moving objects. The camera may be focused from 5 ft. to infinity. It is covered with selected brown leather and has brown leather bellows, while the nickel-plated fittings impart a luxurious appearance. A reversible brilliant and an Iconometer finder, as well as an improved film spool carrier, are part of this fascinating camera. The V. P. Piccolette de Luxe produces excellent pictures, from which enlargements up to 8 x 10 inch may be made. The camera is furnished in a brown leather carrying case.

|              |       |  |
|--------------|-------|--|
| Picture Size | ..... | $1\frac{5}{8} \times 2\frac{1}{2}$ inch                                      |
| Lens         | ..... | Zeiss Tessar $f:4.5$ of 3 inch focal length                                  |
| Shutter      | ..... | Compur with cable and finger release   |
| Speeds       | ..... | 1 to $1/300$ sec. Time and Bulb  |
| Camera Size  | ..... | $1\frac{1}{4} \times 2\frac{1}{2} \times 4\frac{3}{4}$ inch. Weight: 12 ozs. |



*V. P.  
Icarette*

For Rollfilms 1 5/8 x 2 1/2".

**T**HE Vest Pocket Icarette is a delightful and perfectly constructed little instrument. It is built of metal throughout, finished in polished black enamel with nickel trimmings and covered with fine grain leather. Besides the usual brilliant view finder, it has an Iconometer finder, enabling the photographer to observe the picture full size from eye level position. The Compur Shutter has eight speeds ranging from 1 to 1/300 second. This speed arrests motion in photographing rapidly moving objects, such as athletes in action, races, diving, airplanes in flight.



## Zeiss Ikon Cameras

---

The Zeiss Tessar Lens on the V. P. Icarette produces depth of field with illumination and definition, the same as it does in motion pictures, where we all marvel at the perfect detail, even when enlarged to the size of a theater screen. Thus brilliant enlargements up to 8 x 10 inch, or even more, can be made from negatives taken with the V. P. Icarette.

The V. P. Icarette may be used in either horizontal or vertical positions. The shutter can be operated with its flexible cable release on time or bulb for slow exposures of any duration. Thus, this very versatile little camera is as suitable for interior pictures and even portraiture, as it is for snapshots.

Due to its small film size the V. P. Icarette is a very economical camera to operate. In fact, it costs no more to use a V. P. Icarette and having postal-card size enlargements made, than to use a postal-card size camera. The results are as good if not better, the camera is easier to operate, and more convenient to carry. The V. P. Icarette is furnished in a leather case.

|                   |   |
|-------------------|---|
| Picture Size..... | 1 $\frac{5}{8}$ x 2 $\frac{1}{2}$ inch                                    |
| Lens.....         | Zeiss Tessar f:4.5 of 3 inch focal length                                 |
| Shutter.....      | Compur with cable and finger release                                      |
| Speeds.....       | 1 to 1/300 sec. Time and Bulb   |
| Camera Size.....  | 1 $\frac{1}{4}$ x 2 $\frac{3}{4}$ x 5 $\frac{1}{8}$ inch. Weight: 14 ozs. |

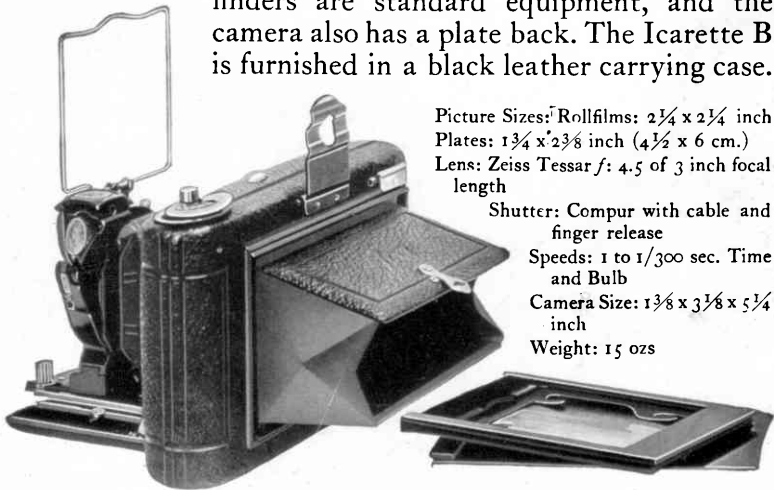




*Icarette*  
*B*

For Rollfilms  $2\frac{1}{4} \times 2\frac{1}{4}$ "  
and Plates  $4\frac{1}{2} \times 6$  cm.  
( $1\frac{3}{4} \times 2\frac{3}{8}$ " )

**T**HIS miniature camera embodies many original features. The high shutter speed,  $1/300$  sec., will arrest rapidly moving objects. It is equally capable of portraiture and interior studies. Focusing is done by a focusing lever to as close as 3 ft. The Zeiss Tessar Lens insures negatives, which can be enlarged up to 11 x 14 inch. The brilliant and the Iconometer finders are standard equipment, and the camera also has a plate back. The Icarette B is furnished in a black leather carrying case.



Picture Sizes: Rollfilms:  $2\frac{1}{4} \times 2\frac{1}{4}$  inch  
Plates:  $1\frac{3}{4} \times 2\frac{3}{8}$  inch ( $4\frac{1}{2} \times 6$  cm.)

Lens: Zeiss Tessar *f*: 4.5 of 3 inch focal length

Shutter: Compur with cable and finger release

Speeds: 1 to  $1/300$  sec. Time and Bulb

Camera Size:  $1\frac{3}{8} \times 3\frac{1}{8} \times 5\frac{1}{4}$  inch

Weight: 15 ozs



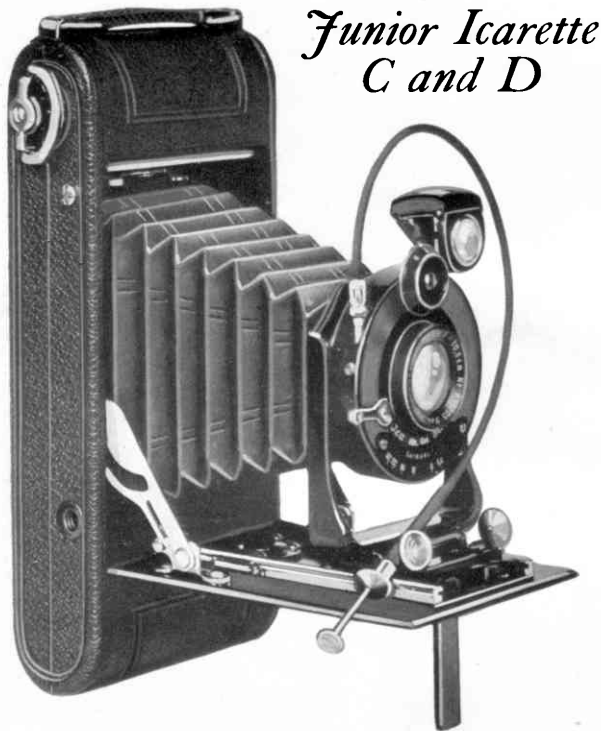
### *Junior Icaettes and Cocarettes*

**W**HENEVER price is an important consideration, and yet a camera is required which will give all-round satisfaction, the Junior models, offered on pages 10 and 11, will make a strong appeal.

They combine simple design with dependable, sturdy construction, and operate with a minimum number of adjustments.

The Junior models are made in two sizes: Model C for photos of  $2\frac{1}{4} \times 3\frac{1}{4}$  inch, Model D for photos of  $2\frac{1}{2} \times 4\frac{1}{4}$  inch.

All Juniors are equipped with anastigmat lenses, fast enough for snapshots, even in poor light. The lenses give good definition, allowing enlargements of many diameters. The shutters are automatic permitting exposures of  $1/25$ ,  $1/50$ ,  $1/100$  second, besides time and bulb. The body of the Juniors is of light metal, which insures stability, and their folding standard carriage gives perfect rigidity to the lens front.



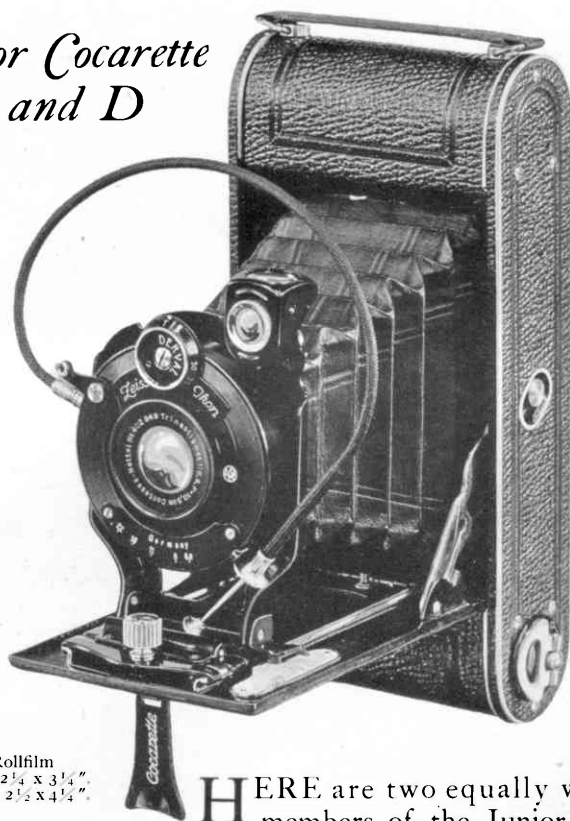
*Junior Icarette  
C and D*

For Rollfilm: Model C,  $2\frac{1}{4} \times 3\frac{1}{4}$ " ; Model D,  $2\frac{1}{2} \times 4\frac{1}{4}$ ".

**T**HE elegantly finished Junior Icarettes are covered with black leather, have leather bellows and nickel trimming. It is a real manufacturing achievement that these models can be offered at such low prices. See details on page 9.

Picture Size ..... Model C,  $2\frac{1}{4} \times 3\frac{1}{4}$  inch. Model D,  $2\frac{1}{2} \times 4\frac{1}{4}$  inch  
Lens ..... Novar f:6.3. Model C,  $4\frac{1}{4}$  inch; Model D,  $5\frac{1}{4}$  inch focal length  
Shutter ..... Automatic with finger and cable release  
Speeds .....  $1/25$  to  $1/100$  sec. Time and Bulb  
Camera Size ..... Model C,  $1\frac{1}{4} \times 3\frac{1}{2} \times 7$  inch. Model D,  $1\frac{5}{8} \times 3\frac{7}{8} \times 8\frac{1}{4}$  inch  
Weight ..... Model C, 21 ozs. Model D, 28 ozs.

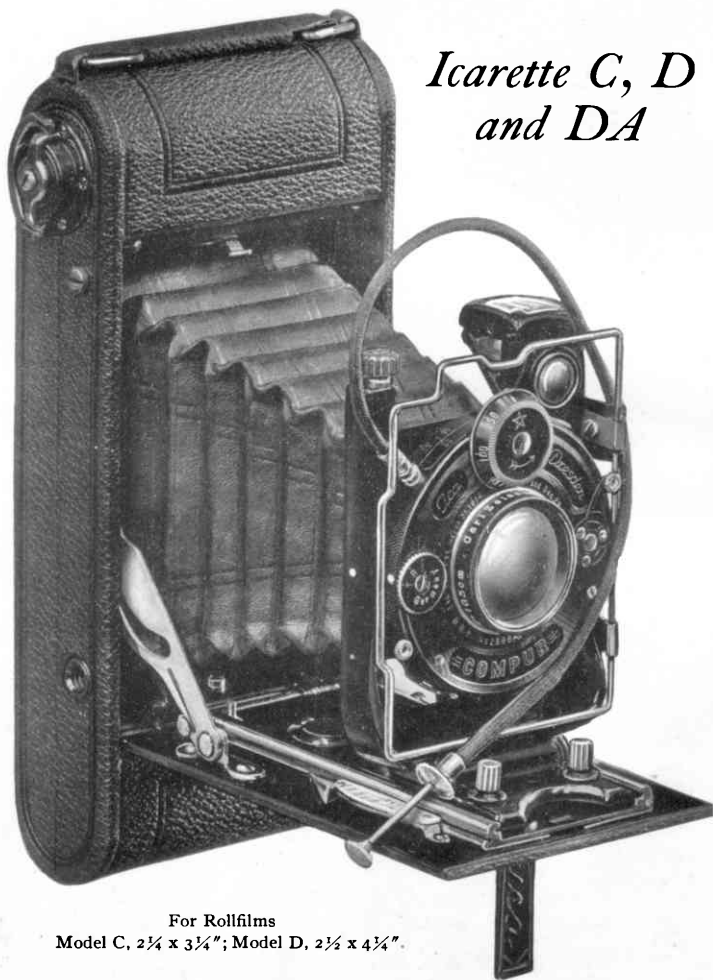
*Junior Cocarette  
C and D*



For Rollfilm  
Model C,  $2\frac{1}{4} \times 3\frac{1}{4}$ "  
Model D,  $2\frac{1}{2} \times 4\frac{1}{4}$ "

**H**ERE are two equally worthy members of the Junior family that will make good outdoor companions. Their many advantages have been enumerated on page 9. The patented film threading mechanism makes the Cocarettes the easiest to load of all rollfilm cameras and assures perfect flatness of the film. Thus, out-of-focus negatives, due to buckling of the film, are eliminated. Elegantly finished in black leather and nickel.

Picture Size . . . . . Model C,  $2\frac{1}{4} \times 3\frac{1}{4}$  inch. Model D,  $2\frac{1}{2} \times 4\frac{1}{4}$  inch  
Lens . . . . . Trinastigmat f:6.8 Model C,  $4\frac{1}{4}$  inch; Model D,  $5\frac{1}{4}$  inch focal length  
Shutter . . . . . Derval Automatic with cable and finger release  
Speeds . . . . . 1/25 to 1/100 sec. Time and Bulb  
Camera Size . . . . . Model C,  $1\frac{3}{8} \times 3\frac{3}{8} \times 6\frac{7}{8}$  inch. Model D,  $1\frac{1}{2} \times 3\frac{1}{2} \times 8$  inch  
Weight . . . . . Model C, 19 ozs. Model D, 26 ozs.



*Icarette C, D  
and DA*

For Rollfilms  
Model C,  $2\frac{1}{2} \times 3\frac{1}{4}$ "; Model D,  $2\frac{1}{2} \times 4\frac{1}{4}$ ".

**T**HE Icarette Models C and D are identical, except for size and weight. They are built entirely of durable light metal, attractively finished in black enamel and nickel, and covered with fine grain pin seal leather. The backs of these models have end locks, secure yet easy to put on or take off and they are positively light-proof.

## Zeiss Ikon Cameras

The improved film holder insures even, free winding of the film, with no possibility of the film climbing on the spool ends, tearing or binding, and the winding key will never chew out the slot of the spool.

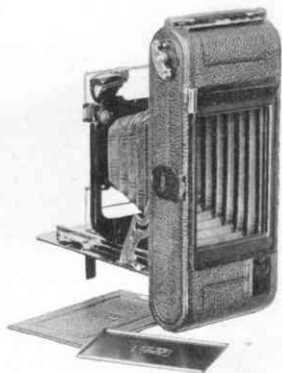
The front has screw operated vertical movement. There is a brilliant reflecting finder, also an Iconometer wire finder, which always indicates the correct view, even when the front is elevated. Focusing is accomplished with a focusing lever.

The optical equipment is the Carl Zeiss Tessar  $f:4.5$  of  $4\frac{1}{8}$  inch focus in the Model C and  $4\frac{3}{4}$  inch focus in the Model D.

The shutter is the Compur with speeds from 1 to  $1/250$  second, beside time and bulb exposures.

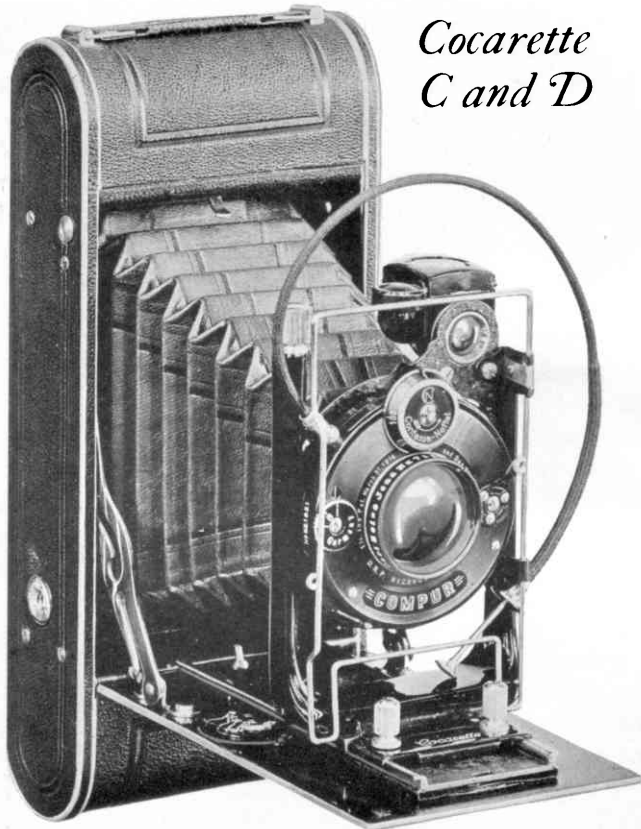
A special model of the Icarette D is called Icarette DA. Like the Icarette D it takes rollfilm  $2\frac{1}{2} \times 4\frac{1}{4}$  inch, but it is furthermore equipped with an adapter for the use of plates or cut films  $2\frac{1}{2} \times 3\frac{1}{2}$  inch ( $6\frac{1}{2} \times 9$  cm.), and of film packs  $2\frac{1}{4} \times 3\frac{1}{4}$  inch.

As a constant companion no better camera could be selected than one of the Icarette Models C or D. A leather case is furnished with each camera.



Picture Size . . . . . Model C,  $2\frac{1}{4} \times 3\frac{1}{4}$  inch. Model D,  $2\frac{1}{2} \times 4\frac{1}{4}$  inch  
Lens . . . . . Zeiss Tessar  $f:4.5$  Model C,  $4\frac{1}{8}$  inch; Model D and DA,  $4\frac{3}{4}$  inch focal length  
Shutter . . . . . Compur with cable and finger release  
Speeds . . . . . 1 to  $1/250$  sec. Time and Bulb  
Camera Size . . . . . Model C,  $1\frac{3}{8} \times 3\frac{3}{8} \times 7$  inch. Model D and DA,  $1\frac{5}{8} \times 3\frac{3}{4} \times 8\frac{1}{4}$  inch  
Weight . . . . . Model C, 25 ozs. Model D, 31 ozs. Model DA, 33 ozs.





*Cocarette  
C and D*

For Rollfilms Model C,  $2\frac{1}{4} \times 3\frac{3}{4}$ "; Model D,  $2\frac{1}{2} \times 4\frac{1}{4}$ ".

**T**HESE de luxe cameras incorporate all the latest improvements. They are covered with fine saffron brown leather, imparting an air of distinction to the camera. The focusing is done with a focusing lever. The objective carrying standard is a single casting with built-in adjustment screw for vertical movement.

The bellows are of high grade brown leather. A brilliant finder with level, as well as the well known eye-level Iconometer finder, are fitted to the camera. Both models are



## Leiss Ikon Cameras

supplied with the Carl Zeiss Tessar  $f:4.5$  Lens and the Compur Shutter, giving eight speed variations. The cameras are furnished in brown leather cases.

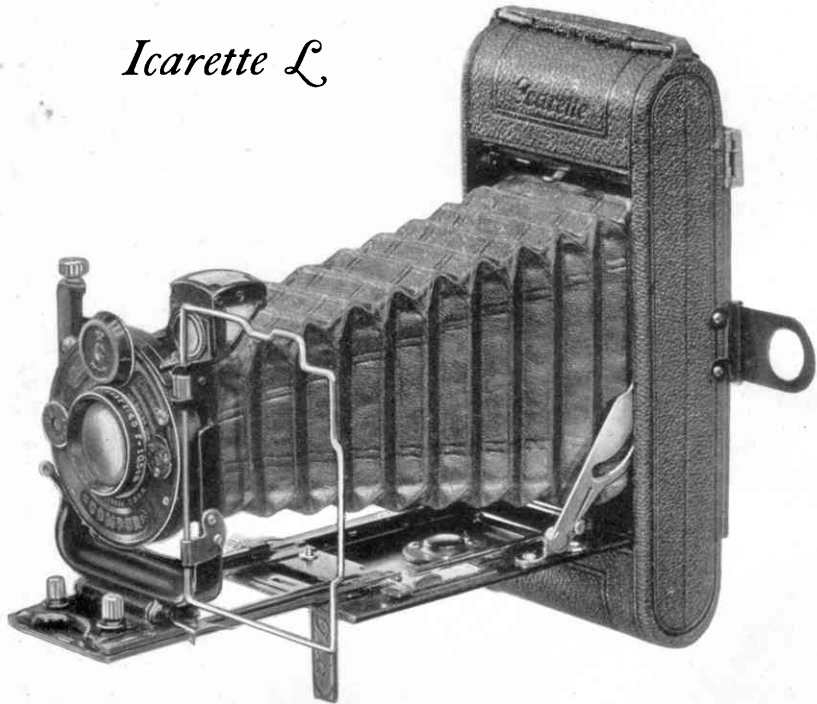


Observe the convenient method of loading the film holder and how the film race prevents buckling of the film.

Picture Size . . . . . Model C,  $2\frac{1}{4} \times 3\frac{3}{4}$  inch; Model D,  $2\frac{1}{2} \times 4\frac{1}{4}$  inch  
Lens . . . . . Zeiss Tessar  $f:4.5$ . Model C,  $4\frac{1}{8}$  inch; Model D,  $4\frac{3}{4}$  inch focal length  
Shutter . . . . . Compur with cable and finger release  
Speeds . . . . . 1 to  $1/250$  sec. Time and Bulb  
Camera Size . . . . . Model C,  $1\frac{1}{4} \times 3 \times 6\frac{1}{2}$  inch; Model D,  $1\frac{1}{2} \times 3\frac{3}{4} \times 8$  inch  
Weight . . . . . Model C, 22 ozs. Model D, 28 ozs.



## *Icarette L*



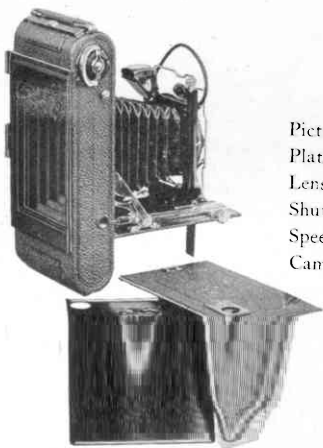
For Rollfilms  $2\frac{1}{4} \times 3\frac{1}{4}$ " and Plates  $2\frac{1}{2} \times 3\frac{1}{2}$ ".

**T**HE Icarette L is a rollfilm and plate camera, having 8 inch double extension bellows. It takes six exposure rollfilms  $2\frac{1}{4} \times 3\frac{1}{4}$  inch of any make. The back is fitted with a panel which is readily removable so that a plate holder, film pack adapter or focusing back may be inserted for the use of plates or cut films  $2\frac{1}{2} \times 3\frac{1}{2}$  inch ( $6\frac{1}{2} \times 9$  cm.) as well as of film packs  $2\frac{1}{4} \times 3\frac{1}{4}$  inch. The 8 inch bellows permit the use of a Distar Lens, and when plates are used, objects within two feet of the camera may be photographed. Proxar Lenses for wide-angle work may be used with the Icarette L, making it a universal camera for all-round photographic work.

## Leiss Ikon Cameras

---

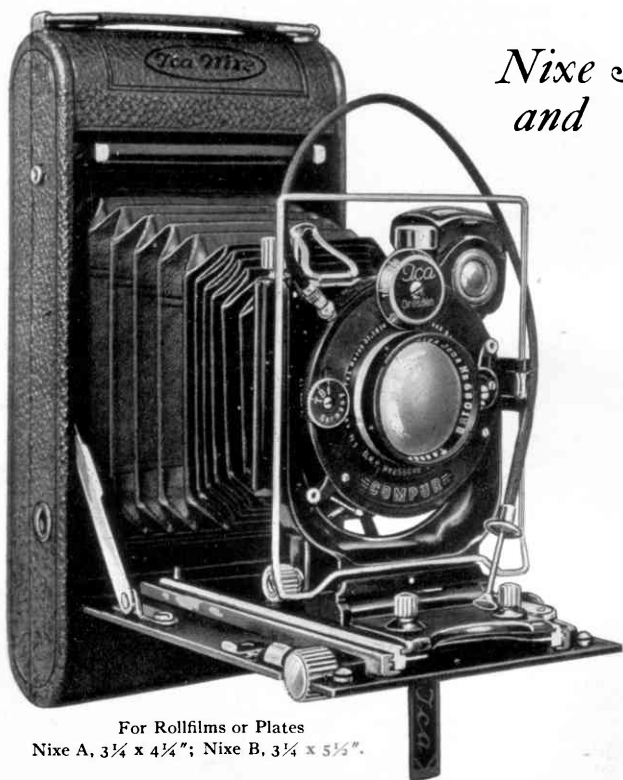
The front can be raised or lowered by means of a micrometer screw. A brilliant finder and the eye-level Iconometer finder allow one to correctly center the picture. The camera is supplied in a leather case.



Picture Size: Rollfilms:  $2\frac{1}{4} \times 3\frac{1}{4}$  inch  
Plates:  $2\frac{1}{2} \times 3\frac{1}{2}$  inch ( $6\frac{1}{2} \times 9$  cm.)  
Lens: Zeiss Tessar  $f:4.5$  of  $4\frac{1}{8}$  inch focal length  
Shutter: Compur with cable and finger release  
Speeds: 1 to  $1/250$  sec. Time and Bulb  
Camera Size:  $1\frac{1}{2} \times 3\frac{5}{8} \times 7\frac{1}{8}$  inch. Weight: 26 ozs.

Supplementary Distar and Proxar Lenses may be used on this model. See page 49.





*Nixe A  
and B*

For Rollfilms or Plates  
Nixe A,  $3\frac{1}{4} \times 4\frac{1}{4}$ " ; Nixe B,  $3\frac{1}{4} \times 5\frac{1}{2}$ ".

**N**O more complete or better film cameras have ever been produced. These most unusual models can be used either with rollfilms or plates. Constructed entirely of a special light metal alloy, they are attractively finished in durable black enamel with nickel trimmings, and covered with selected black grain leather.

The bellows extension is essential for telephoto work with the Distar Lens. For close work the camera will give excellent results with the Proxar supplementary lens. The "Nixe" has ample horizontal and vertical front movements, useful for photographing buildings or eliminating objectionable fore-

## *Leiss Ikon Cameras*

ground. The adjustments are operated by micrometer screws.

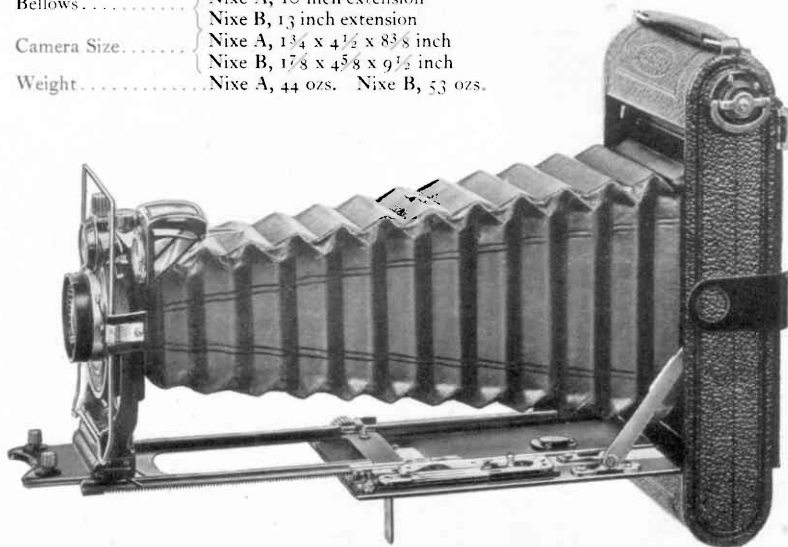
In addition to the usual brilliant finder, an Iconometer finder is fitted. The image shown in the wire frame, when looking through the rear peep-hole, is always correct, regardless of the position of the camera front or bellows extension.



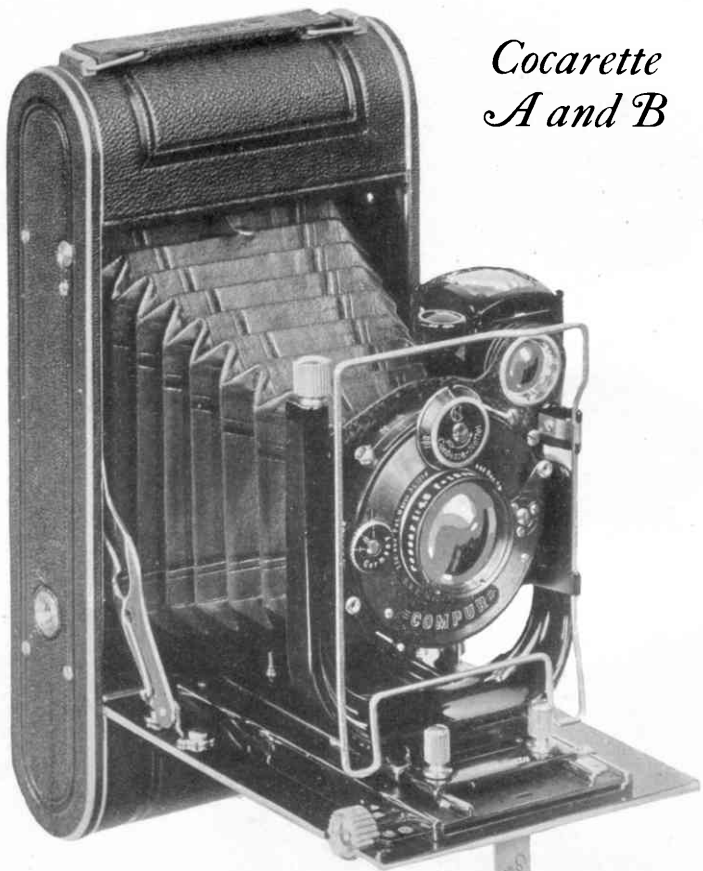
The back of the "Nixe" is fitted with a removable panel and pressure plate. When these are removed, a focusing back or plate holder may be inserted, which may be obtained separately.

The new film-holding device simplifies loading and assures perfect alignment, supplying just sufficient tension to keep the film absolutely flat at all times. The camera is furnished in a leather case.

|                   |  |                             |
|-------------------|--|-----------------------------|
| Picture Size..... | Nixe A, 3 1/4 x 4 1/4 inch.  | Nixe B, 3 1/4 x 5 1/2 inch. |
| Lens.....         | Zeiss Tessar f:4.5 Nixe A, 5 1/4 inch; Nixe B, 6 inch focal length |                             |
| Shutter.....      | Compur with cable and finger release                               |                             |
| Speeds.....       | 1 to 1/200 sec. Time and Bulb                                      |                             |
| Bellows.....      | Nixe A, 10 inch extension  |                             |
|                   | Nixe B, 13 inch extension  |                             |
| Camera Size.....  | Nixe A, 1 3/4 x 4 1/2 x 8 3/8 inch                                 |                             |
|                   | Nixe B, 1 7/8 x 4 5/8 x 9 1/2 inch                                 |                             |
| Weight.....       | Nixe A, 44 ozs.  | Nixe B, 53 ozs.             |



Supplementary lenses Distar and Proxar may be used on these models. See page 49.



*Cocarette  
A and B*

For Rollfilms  
Model A,  $3\frac{1}{4} \times 4\frac{1}{4}$ " ; Model B,  $3\frac{1}{4} \times 5\frac{1}{2}$ ".

**T**HEIR appearance combined with the sturdy construction will appeal to those desiring an efficient camera of a pretentious size.

The Cocarette A takes pictures in the popular size of  $3\frac{1}{4} \times 4\frac{1}{4}$  inch, whereas the Cocarette B takes postal-card size pictures. Both models are equipped with the fast Zeiss Tessar

## *Leiss Ikon Cameras*

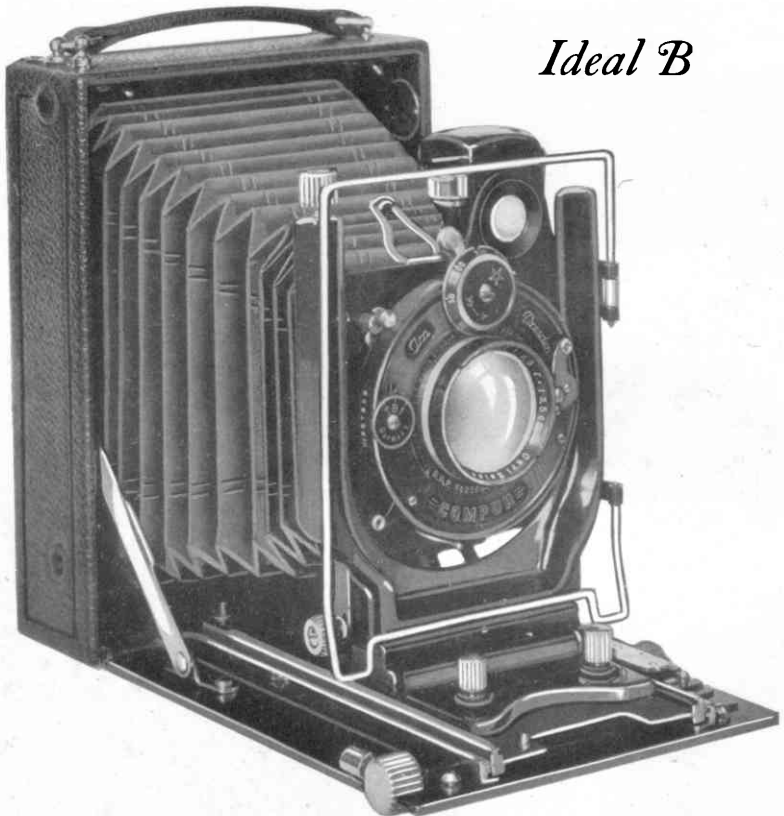
---

*f*:4.5 and the Compur Shutter. The camera is easily and quickly loaded.

It is equipped with a reversible brilliant finder and also an Iconometer finder. The body of the camera is made of aluminum, covered with brown morocco leather. The dull white silver finish of the metal trimmings, together with the brown leather covering and brown leather bellows make this model strikingly beautiful. Model A takes rollfilms for 6 or 12 exposures; Model B for 6 or 10 exposures. The cameras are supplied in a leather case.

Picture Size.....Model A,  $3\frac{1}{4} \times 4\frac{1}{4}$  inch. Model B,  $3\frac{1}{4} \times 5\frac{1}{2}$  inch  
Lens.....Zeiss Tessar/*f*:4.5 Model A,  $4\frac{3}{4}$  inch; Model B, 6 inch focal length  
Shutter.....Compur with cable and finger release  
Speeds.....Model A, 1 to  $1/250$  sec. Model B, 1 to  $1/200$  sec. Time and Bulb  
Camera Size.....Model A,  $1\frac{1}{2} \times 4 \times 8$  inch. Model B,  $1\frac{3}{4} \times 4\frac{1}{2} \times 9$  inch  
Weight.....Model A, 34 ozs. Model B, 50 ozs.





*Ideal B*

For Plates and Film Packs  $3\frac{1}{2} \times 4\frac{3}{4}$ " (9 x 12 cm.)

**T**HE Ideal B is a camera of larger proportions than any of the foregoing models.

The construction is entirely of metal, insuring strength and rigidity. The finish is black enamel and nickel, the covering of fine grain seal leather.

Its bellows extension of  $11\frac{1}{2}$  inches is sufficient to permit the use of the Distar Lens. Photographs can be made of objects within 10 inches of the camera, a necessity when making copies and pictures of small objects.



## Leiss Ikon Cameras

---

The front has a vertical movement of  $1\frac{1}{4}$  inches and a horizontal movement of  $1\frac{3}{8}$  inches. There is also a vertical swing back, quite an innovation in so small a camera.

One of the most important features of the Ideal B is the Iconometer, the most accurate finder that can be fitted to a camera. Holding the camera at the eye's level, the view is observed through the Iconometer. As the metal frame moves forward, backward, up or down, with the lens, every variation in the angle of view, due to extending the bellows, is accurately registered. A large brilliant reflecting finder is also provided.

Metal kits may be had for both plate holders and film pack adapter so that  $3\frac{1}{4} \times 4\frac{1}{4}$  inch plates or film packs may also be used.

The shutter is interchangeable and may be easily removed, being held in place with a bayonet lock.

A leather carrying case, three single metal plate holders, and film pack adapter are supplied with every camera.

|                   |   |
|-------------------|---|
| Picture Size..... | $3\frac{1}{2} \times 4\frac{3}{4}$ inch (9 x 12 cm.)                |
| Lens.....         | Zeiss Tessar <i>f</i> :4.5 of $5\frac{1}{4}$ or 6 inch focal length |
| Shutter.....      | Compur with cable and finger release                                |
| Speeds.....       | 1 to $1/200$ sec. Time and Bulb                                     |
| Bellows.....      | Black leather $11\frac{1}{2}$ inch extension                        |
| Camera Size.....  | $2\frac{1}{8} \times 5 \times 6\frac{5}{8}$ inch. Weight: 46 ozs.   |

Supplementary lenses Distar and Proxar may be used on this model. See page 49.



The front has a vertical movement of  $1\frac{1}{4}$  inches and a horizontal movement of  $1\frac{3}{8}$  inches. There is also a vertical swing back, quite an innovation in so small a camera.

One of the most important features of the Ideal B is the Iconometer, the most accurate finder that can be fitted to a camera. Holding the camera at the eye's level, the view is observed through the Iconometer. As the metal frame moves forward, backward, up or down, with the lens, every variation in the angle of view, due to extending the bellows, is accurately registered. A large brilliant reflecting finder is also provided.

Metal kits may be had for both plate holders and film pack adapter so that  $3\frac{1}{4} \times 4\frac{1}{4}$  inch plates or film packs may also be used.

The shutter is interchangeable and may be easily removed, being held in place with a bayonet lock.

A leather carrying case, three single metal plate holders, and film pack adapter are supplied with every camera.

|                   |   |
|-------------------|---|
| Picture Size..... | $3\frac{1}{2} \times 4\frac{3}{4}$ inch (9 x 12 cm.)                |
| Lens.....         | Zeiss Tessar <i>f</i> :4.5 of $5\frac{1}{4}$ or 6 inch focal length |
| Shutter.....      | Compur with cable and finger release                                |
| Speeds.....       | 1 to 1/200 sec. Time and Bulb                                       |
| Bellows.....      | Black leather 11 $\frac{1}{2}$ inch extension                       |
| Camera Size.....  | $2\frac{1}{8} \times 5 \times 6\frac{5}{8}$ inch. Weight: 46 ozs.   |

Supplementary lenses Distar and Proxar may be used on this model. See page 49.



## Leiss Ikon Cameras

---

### Trona



For Plates and Film Packs  $3\frac{1}{4} \times 4\frac{1}{4}$ ".

**T**HE popular size of the pictures made with the Trona ( $3\frac{1}{4} \times 4\frac{1}{4}$  inch) and the general make-up of the instrument appeal to those who require a very compact camera, making a picture of suitable size as a contact print, and combining in its construction every required adjustment for serious photography.

A large protecting hood over the ground glass back obviates the use of a focusing cloth.

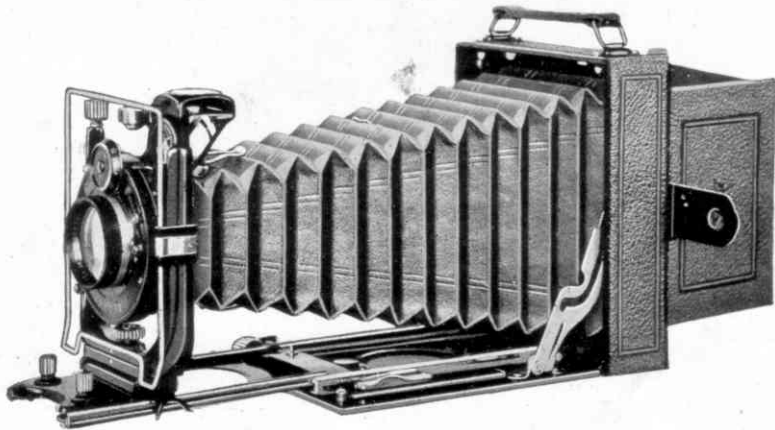
The Icometer wire finder is the most accurate of all camera finders. It indicates correctly the view included when

the lens front is used for vertical or horizontal movement. Even when a supplementary lens such as the Zeiss Distar is used, the Iconometer shows the correct view.

The maximum bellows extension is ten inches, so that objects within twelve inches of the camera may be photographed without a supplementary lens. For distant objects this long bellows extension can be used to excellent advantage with a Zeiss Distar Lens. When extended, the front stops automatically, focused for distance. Focusing is done with rack and pinion which may be locked for any distance.

With each camera are supplied three single metal plate holders, film pack adapter and a leather carrying case.

|                   |  |
|-------------------|--|
| Picture Size..... | 3¼ x 4¼ inch                               |
| Lens.....         | Zeiss Tessar f:4.5 of 5¼ inch focal length |
| Shutter.....      | Compur with cable and finger release       |
| Speeds.....       | 1 to 1/200 sec. Time and Bulb              |
| Bellows.....      | Black leather, 10 inch extension           |
| Camera Size.....  | 2 x 4½ x 5¾ inch. Weight 33 ozs.           |



Supplementary lenses Distar and Proxar may be used on this model. See page 49.